

GLOVES CATALOGUE



Gripvanta

Grip the Game. Own the Leather.

SAFETY | SPORTS | INDUSTRIAL GLOVES

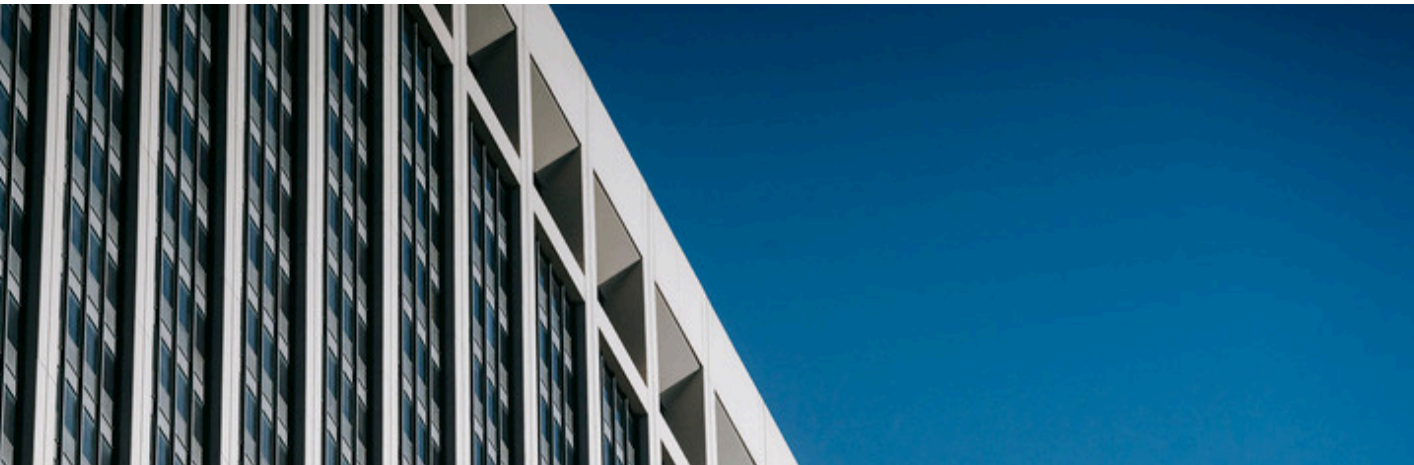


www.gripvanta.com



Gripvanta

Grip the Game. Own the Leather.



WHY CHOOSE US

MANUFACTURER-DIRECT ACCESS

Verified production partners ensure competitive pricing, consistent quality, and production control.

SINGLE POINT OF COORDINATION

One interface for sourcing, quality follow-up, and export execution—reducing buyer workload and lead time.

CONFIDENTIAL SUPPLIER NETWORK

Supplier identities remain protected unless disclosure is mutually agreed in writing.

CONTROLLED QUALITY PROCESS

Strict adherence to approved samples and specifications, with inspection support when required.

CUSTOMIZATION & OEM CAPABILITY

Flexible support for private labeling and market-specific product requirements.

LONG-TERM PARTNERSHIP FOCUS

Built for sustainable trade relationships rather than transactional sales.

SCALABLE & RELIABLE SUPPLY

Multi-source coordination supports both trial orders and high-volume supply.

EXPORT & TRADE EXPERTISE

Experienced handling of export documentation, packaging standards, and international trade practices.



Gripvanta

Grip the Game. Own the Leather.

Assembly Gloves

PREMIUM QUALITY



Front Goat, Sheep Leather Back Interlock, forway with Blue Piping , All Sizes : 8" to 11"

ART #
DLI-786



Front Goat, Sheep Leather Back Interlock & Polestar Fabric with Black Piping , All Sizes : 8" to 11"

ART #
DLI-787



Front Goat, Sheep Leather Back Interlock & Polestar Fabric with Black Piping , All Sizes : 8" to 11"

ART #
DLI-788



Front Goat, Sheep Leather Back Interlock & Polestar Fabric with Gary Piping , All Sizes : 8" to 11"

ART #
DLI-789



Front Goat, Sheep Leather Back Interlock & Polestar Fabric with Gray Piping . All Sizes : 8" to 11"

ART #
DU-790



Front Amara Synthetic Leather Back Interlock & Polestar Fabric with Black Piping . All Sizes : 8" to 11"

ART #
DU-791



Front Goat, Sheep Leather Back Interlock & Flees
All Sizes : 8" to 11"

ART #
DU-792



Front Goat, Sheep Leather Back Interlock & Flees
with Orange Piping . All Sizes : 8" to 11"

ART #
DU-793



Front Goat, Sheep Leather Back Interlock & Flees
with Elastic Velcro Strap & Red Piping .
All Sizes : 8" to 11"

ART #
DU-794



Front Goat, Sheep Leather Back Interlock & Flees
with Overlock
All Sizes : 8" to 11"

ART #
DU-795

Garden Gloves

SPECIAL FOR LADIES

Ladies First



ART #
DLI-901

CE

EN388:2003



ART #
DLI-902



ART #
DLI-903

Ladies First



ART #
DLI-904



ART #
DLI-905



EN388:2003



Ladies First



ART #
DLI-906



ART #
DLI-907



EN388:2003



Ladies First



ART #
DLI-908



ART #
DLI-909



EN388:2003



Tig - Driver Gloves

REGULAR GLOVES

Workers Choice



Made Of Goat/cow Grain Leather Back Knitted Wrist
Size: 8" - 11"

ART #
DLI-500

CE

EN388:2003



Made Of Front Palm Yellow Split Leather
Back Yellow Cow Grain Leather Inside Full Fleece
Lining Size: 8" - 11"

ART #
DLI-501

Workers Choice



Made Of Front Goat Skin Yellow Split Leather Palm
Back Goat Grain Leather Inside Full Fleece
Lining Size: 8" - 11"

ART #
DLI-502

CE

EN388:2003



Made Of Front Palm Goat Skin Leather
Back Yellow Cow Split Leather Inside Full Fleece
Lining Size: 8" - 11"

ART #
DLI-503

Workers Choice



Made Of Goat Grain Leather. Chrome Free
Gloves with Elastic & Piping , Size: 8" - 11"

ART #
DLI-504



EN388:2003



Made Of White Goat Leather, Around Thumb Back
Velcro Strap With Elastic Shirred Wrist , Size: 8" - 11"

ART #
DLI-505

Workers Choice



Made Of Yellow / Cow Grain Leather Wing Thumb
With Elastic Shirred Wrist , Size: 8" - 11"

ART #
DLI-506



EN388:2003



Made Of Soft Yellow Cow Grain Leather
Size: 8" - 11"

ART #
DLI-507

Workers Choice



Made Of White Goat Leather, Wing Thumb Back
Elastic Shirred Wrist , Size: 8" - 11"

ART #
DLI-508



EN388:2003



Made Of White Goat Leather, Wing Thumb Back
Elastic Shirred Wrist , Size: 8" - 11"

ART #
DLI-509

TIG MASTER & TIC WELDING

HEAVY DUTY GLOVES



Tig Master

CE

EN388:2003



Made Of Natural Goat Skin Leather, Brown Spilt Leather Cuff , Reinforced Palm With Straight Thumb , Kevlar & Normal Thread , Size: 8" to 11"

ART #
DLI-309



Tig Master

Made Of Cow Grain Leather Back
Brown Color Cuff 10 Cm With Black Piping
Size: 8" to 11"

ART #
DLI-310



New

Made Of Spilt Leather Back Spilt Leather , Canvas Cuff 10 Cm With Red Piping , Size: 8" to 11"

ART #
DLI-311

Kevlar Thread



Made Of Natural Goat Skin Leather, Black Spilt Patch Palm
Orange Spilt Leather Cuff , Kevlar & Normal Thread ,
Size: 8" to 11"

ART #
DU-312

CE

EN388:2003



Made Of Goat Grain Leather , Wing Thumb Black
Cow Split Leather , 15 Cm Cuff , Size: 8" to 11"

ART #
DU-313

Kevlar Thread



Made Of Natural Goat Skin Leather, Golden Spilt Leather
Cuff , Kevlar & Normal Thread ,Size: 8" to 11"

ART #
DU-314

CE

EN388:2003



Made Of Natural Goat Skin Leather, Natural Spilt
Leather Cuff , Kevlar & Normal Thread , Size: 8" to 11"

ART #
DU-315

Kevlar Thread



Made Of Natural Goat Skin Leather, Red Spilt Leather
Cuff, Kevlar & Normal Thread ,Size: 8" to 11"

ART #
DU-316

CE

EN388:2003



Made Of Natural Goat Skin Leather, Green Spilt Leather
Cuff , Kevlar & Normal Thread , Size: 8" to 11"

ART #
DU-317

Candy Stripe Gloves

TAKE CARE

Safety First



Made Of Cow Grain Leather Back Blue Cotton Fabric Rubberized Cuff
Size: 8" to 11"

ART # DLI-701

CE

EN388:2003



Made Of Goat / Cow / Buffalo Grain Back Fabric & Rubberized Cuff Yellow Piping . Size: 8" to 11"

ART # DLI-702

Safety First



Made Of Goat / Cow / Buffalo Grain Back Fabric & Rubberized Cuff
All Sizes

ART # DLI-703

CE

EN388:2003



Made Of Goat / Cow / buffalo Grain Back Fabric & Rubberized Cuff. Size: 8" To 11"

ART # DLI-704

Safety First



Patch Palm Rigger Gloves Made Of Natural Cow Split Leather Back Dark Blue Cotton Fabric Rubberized Cuff , Size: 10.5"

CE

EN388:2003



Patch Palm Rigger Gloves Made Of Natural Cow Split Leather Back Light Blue Cotton Fabric Rubberized Cuff , Size: 10.5"

ART # DLI-706

Safety First



Patch Palm Rigger Gloves Made Of Natural Cow Split Leather Back Dark Blue Cotton Fabric Rubberized Cuff , Size: 10.5"

ART # DLI-707

CE

EN388:2003



Patch Palm Denim Zeen Gloves Made Of Natural Cow Split Leather Back Dark Blue Zeen Cuff , Size: Long Cuff 10cm

ART # DLI-708

Safety First



Made Of Light Blue Cow Split Leather Back Yellow Cotton Fabric Rubberized Cuff , Light Blue Reinforced Palm Size: 10.5"

ART # DLI-709

CE

EN388:2003



Made Of Natural Cow Split Leather Back Green Cotton Fabric Rubberized Cuff Size: 10.5"

ART # DLI-710

Welding Gloves



HEAVY DUTY

Kevlar Thread



Made Of Yellow Cow Split Leather , Apron Palm
Size: 14" - 18"

ART #
DLI-400



Kevlar Thread

ART #
DLI-401

Made Of Cow Split Leather , Apron Palm
With Black Piping , Size: 14" - 16"



Kevlar Thread

ART #
DLI-402

Made Of Cow Split Leather , Yellow Palm
With Yellow Piping , Size: 14" - 16"

Kevlar Thread



Made Of Palm Yellow Cow Hide Leather Reinforced Thumb Back Red Cow Spilt Leather White Piping , Kevlar & Normal Thread Size: 14" - 16"

ART # DLI-403



Made Of Yellow Cow Split Leather Black Piping & Black Reinforced Double Palm With Thumb, Double Cuff Kevlar & Normal Thread , Size: 14" - 16"

ART # DLI-404

Kevlar Thread



Made Of Cow Split Leather Inside Fleece / Cotton Lining With Yellow Piping All Sizes

ART # DLI-405



Made Of Brown Cow Split Leather With Black Cuff & Black Piping. Kevlar & Normal Thread Size: 14" - 16"

ART # DLI-406

Kevlar Thread



Made Of Green Cow Split Leather With Yellow Welting Kevlar & Normal Thread Size: 14" - 16"

ART # DLI-407



Made Of Natural Cow Split Leather With Yellow Piping Kevlar & Normal Thread Size: 14" - 16"

ART # DLI-408

Fire Fighting & Mig Welding



HEAVY DUTY

Kevlar Thread



Made Of Black Cow Split Leather Reinforced Blue
Double Palm & Extra Palm With Thumb & Cuff
Black Welted , Kevlar & Normal Thread Size: 14" - 16"

ART #
DLI-101



Kevlar Thread



Made Of Cow Split Leather ,Palm Side Orange,
Reinforced Palm Back Aluminized Carbon Kevlar,
Inside Kevlar Wool Lining with Kevlar Thread
Inside Natural Cuff , Size: 16"

ART #
DLI-102



Made Of Yellow Suede Cow Split Leather Lined With
Kevlar Fabric Back With Black Fabric& Black
Elastic ,Provides Edit Cut & Abrasion Resistance
Kevlar Thread with Kevlar Elastic , Waterproof

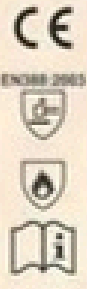
ART #
DLI-103



Kevlar Thread

Made Of Palm Yellow Cow Hide Split Leather Reinforced Palm Black Cuff With Black Piping
Kevlar & Normal Thread Size: 14" - 16"

ART #
DLI-104



Made Of Cow Grain Leather Back Split & Neoprene Kevlar & Normal Thread , Size: 14" - 16"

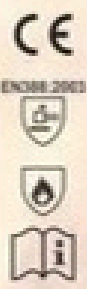
ART #
DLI-105



Kevlar Thread

Made Of Goat Skin Leather, Front Fashion Palm , Back Orange Split Cuff with Lining , Size: 14" - 16"

ART #
DLI-106



Made Of Cow Grain Back Blur Forway Blue Split Leather Cuff, Kevlar & Normal Thread Size: 14" - 16"

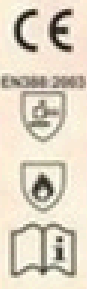
ART #
DLI-107



Kevlar Thread

Made Of Cow Hide Grain Leather With Yellow Palm & Back Yellow Cuff With Lining Size: 14" - 16"

ART #
DLI-108



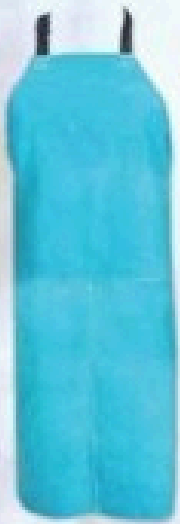
Made Of Natural Cow Grain Black & Yellow Split Leather Back Yellow Split With Black Split Cuff With Lining Size: 14" - 16"

ART #
DLI-109

Welding Accessories



Cow Hide Spilt Leather Aprons, Natural and Colors



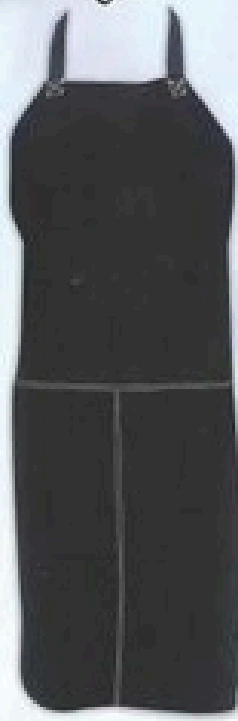
60 x 120

DLI-200



60 x 90

DLI-201



60 x 90

DLI-202



60 x 120

DLI-203

Cow Hide Leather Grain Apron, Spats and Mask



DLI-204



DLI-205



DLI-206

Cow Hide Split Leather Jacket, Youks, Pant and Spats



DLI-207



DLI-209

DLI-208



DLI-210



DLI-211



Cow Hide Split Leather Jacket, Pant, Spats and Elbow



DLI-212



DLI-213



DLI-214



DLI-215



DLI-216

Made Of Premium Quality
Cow Split Leather All Sizes



DLI-217

Made Of Yellow Split Leather,
Green Piping & 6 Pieces
All Colors & All Sizes



DLI-218

Made Of Brown Split Leather
Front Bottoms
All Colors & All Sizes

Impact Gloves & Mechanics Wear

HIGH PERFORMANCE



Cut-resistant Anti-impact Hi-viz Glove Made With Four Way Fabric , Rubber Patches On Back Of Hand For Protection & Bright Coloring For Higher Awareness.

ART #
DLI-801



Anti-impact Hi-viz Glove Made With Four Way Fabric , Rubber Patches On Back Of Hand For Protection Silicon Grip & Bright Coloring For Higher Awareness.

ART #
DLI-802



High-viz Anti-impact Gloves With Four way Fabric Rubber Patches On Back Of Hand For Protection And Bright Coloring For Higher Awareness.

ART #
DLI-803



High-viz Anti-impact Gloves With Four way Fabric Rubber Patches On Back Of Hand For Protection And Bright Coloring For Higher Awareness.

ART #
DLI-804



Reinforcement Palm in Synthetic Leather with Silicon Printed
Full back of hand and finger Impact protections
Neoprene Wrist with Hook-and-loop closure
provides , Size: S - XXL

ART #
DLI-805

CE

EN388:2003



Made Of Goat / Sheep Grain Leather Back Spandex
Fabric With Elastic All Sizes

ART #
DLI-806



Made Of Cow / Goat Grain Leather Back Spandex
With Velcro Strap & Elastic , All Sizes

ART #
DLI-807

CE

EN388:2003



Made Of Cow / Goat Grain Leather Back Spandex
With Velcro Strap & Elastic , All Sizes

ART #
DLI-808

CE

EN388:2003



Spandex Liner, Silicone Pattern Palm , Velcro Wrist Strap.
Back Four way Fabric Yellow , Size : S, M, L, XL

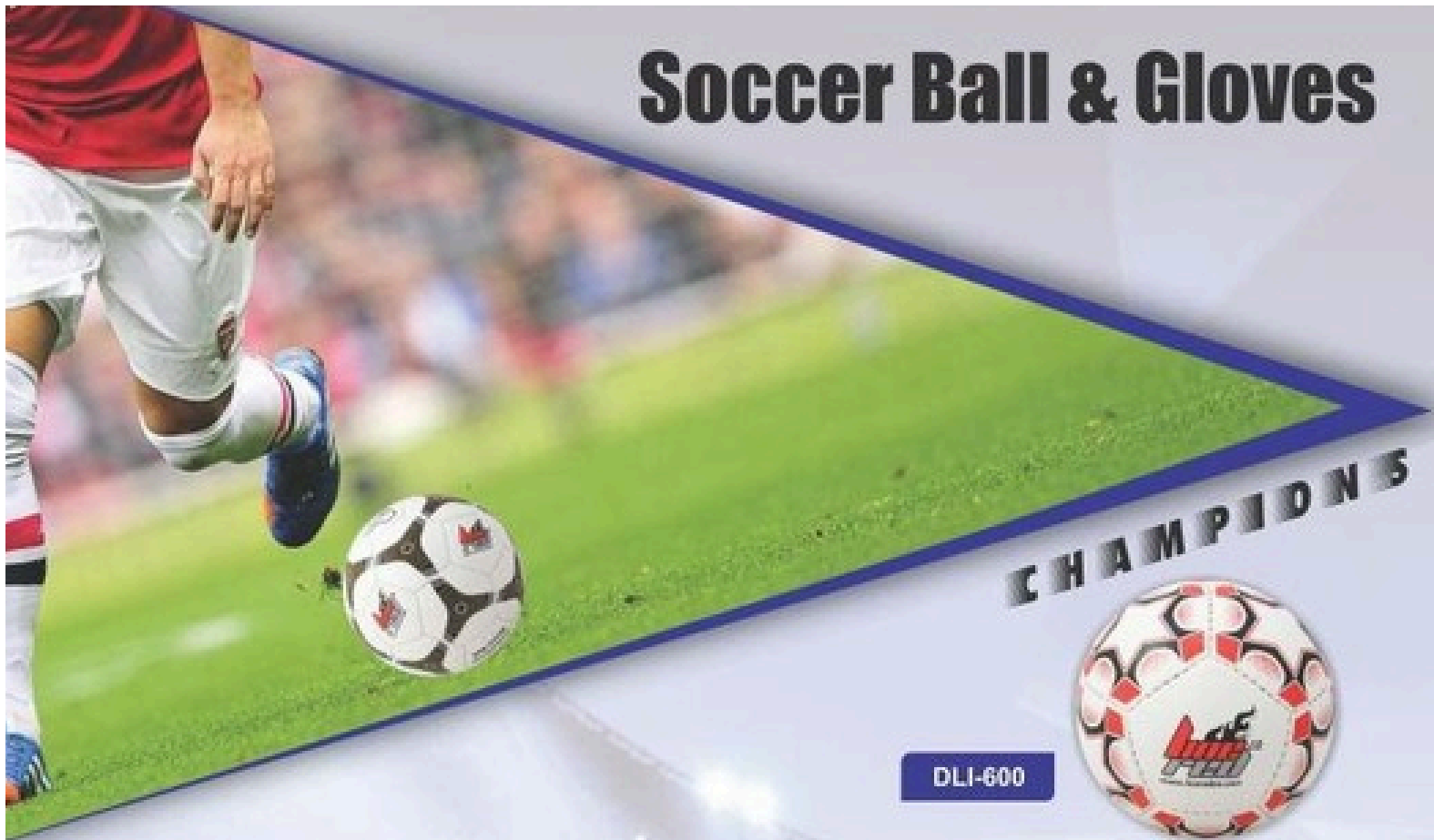
ART #
DLI-809



Made Of Cow / Goat Grain Leather Back Spandex
With Velcro Strap All Sizes

ART #
DLI-810

Soccer Ball & Gloves



CHAMPIONS



DLI-600



DLI-601



DLI-602



DLI-603



DLI-604

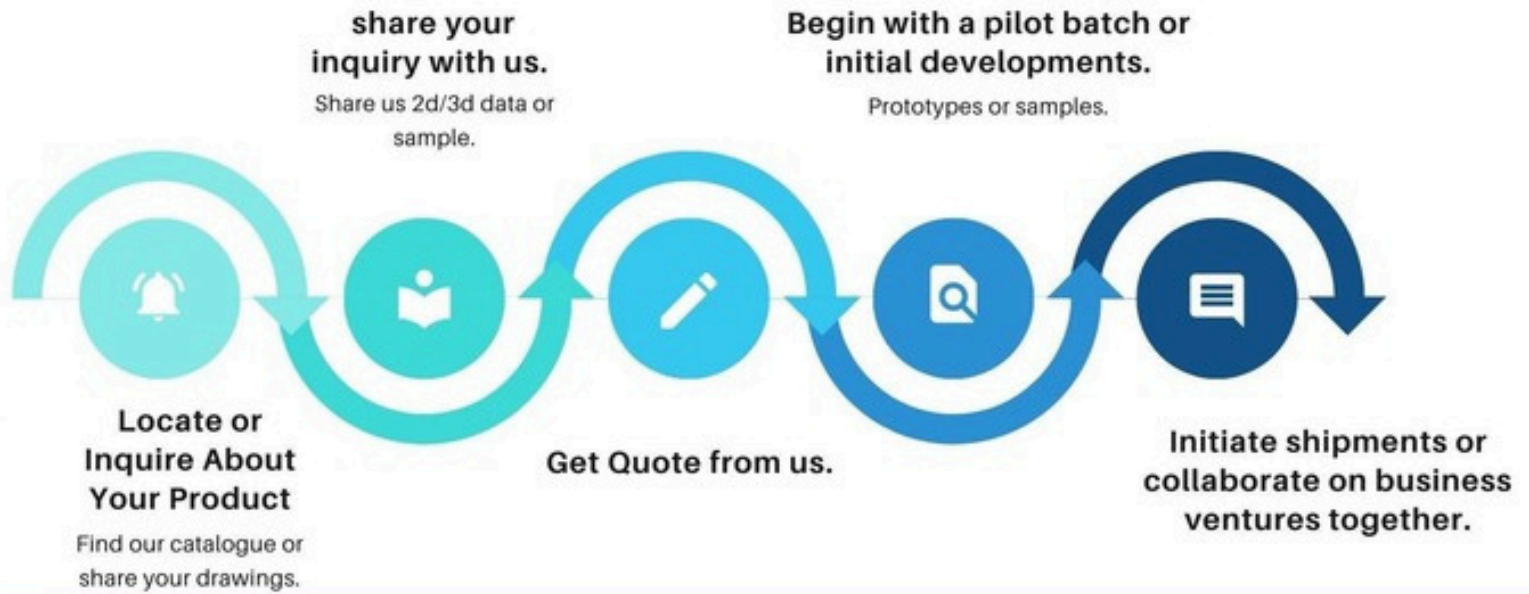


DLI-605



Gripvanta

Grip the Game. Own the Leather.



THANK YOU

ADDRESS

China | USA | UAE | Pakistan

TELEPHONE | WHATSAPP

+92-321-8862777

WEBSITE

www.gripvanta.com



Gripvanta

Grip the Game. Own the Leather.

Scan to Connect

